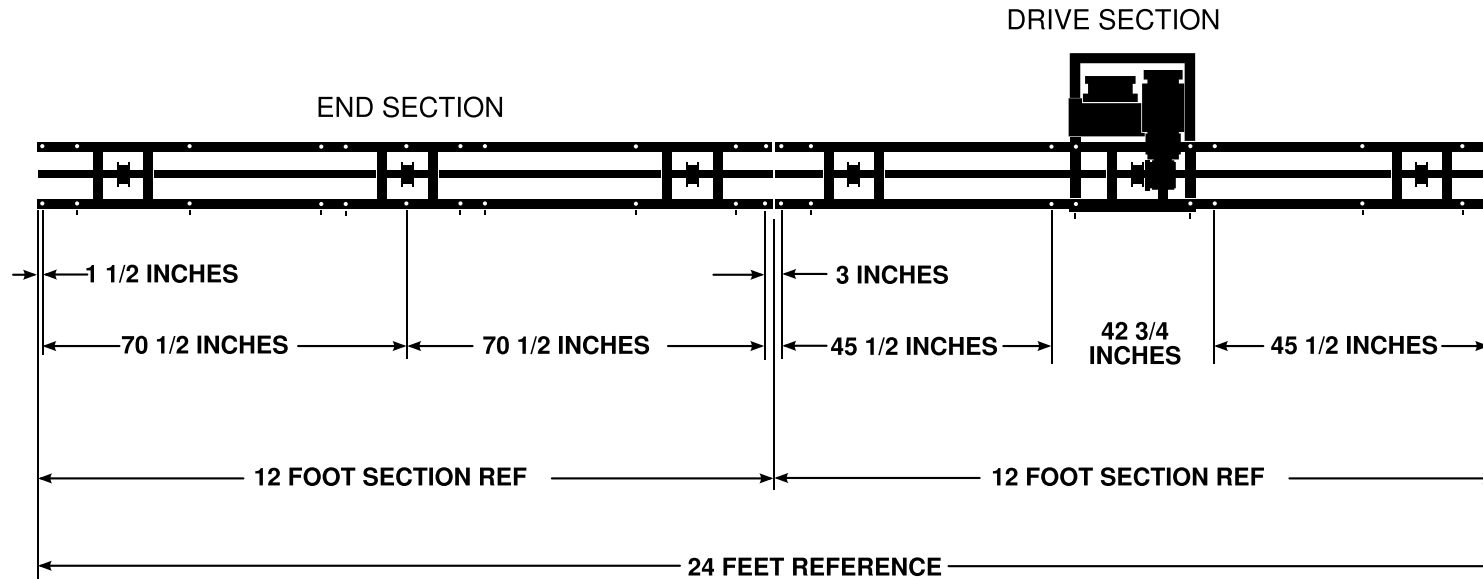


REV:	DESCRIPTION:	DATE:	OK BY:
A	RELEASED	JUN 3, 2013	ART K.
B	REVISED NOTES	NOV 30, 2017	JAKE E.



NOTES

1. WEIGHT OF EMPTY MACHINE IS 580 POUNDS
2. LIFTING CAPACITY IS 2,000 POUNDS
3. 2HP MOTOR 208V 9A

ELECTRICAL REQUIREMENTS:

1. SIZE 10 AWG WIRE
2. TWO 120V, ONE NEUTRAL, ONE GROUND
3. NEMA L14-20R RECEPTACLE
4. 20 AMP BREAKER REQUIRED FOR EACH MACHINE

TITLE:	CUT SHEET AND MOUNTING POINTS, 24 FOOT MACHINE TWO 12 FOOT LONG SECTIONS, 2 HP	
DWG NO:	P-2027	REV: B