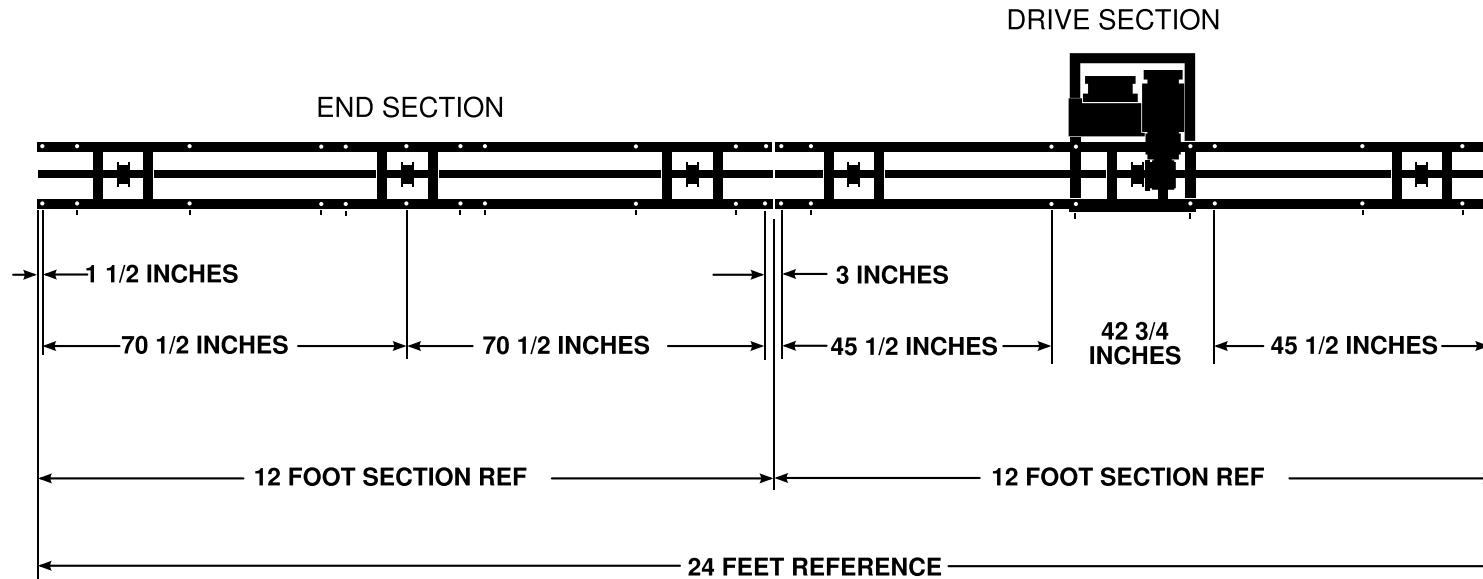


REV:	DESCRIPTION:	DATE:	OK BY:
B	REVISED	APR 24, 2013	ART K.
C	REVISED	APR 30, 2013	JIM A.
D	REVISED NOTES	NOV 30, 2017	JAKE E.



Notes:

1. WEIGHT OF EMPTY MACHINE IS 580 POUNDS
2. LIFTING CAPACITY IS 2,000 POUNDS
3. 1HP MOTOR 208V 6.4A

ELECTRICAL REQUIREMENTS:

1. SIZE 10 AWG WIRE
2. TWO 120V, ONE NEUTRAL, ONE GROUND
3. NEMA L14-20R RECEPTACLE
4. 20 AMP BREAKER REQUIRED FOR EACH MACHINE

TITLE: CUT SHEET AND MOUNTING POINTS, 24 FOOT MACHINE TWO 12 FOOT LONG SECTIONS	
DWG NO: P-2023	REV: D